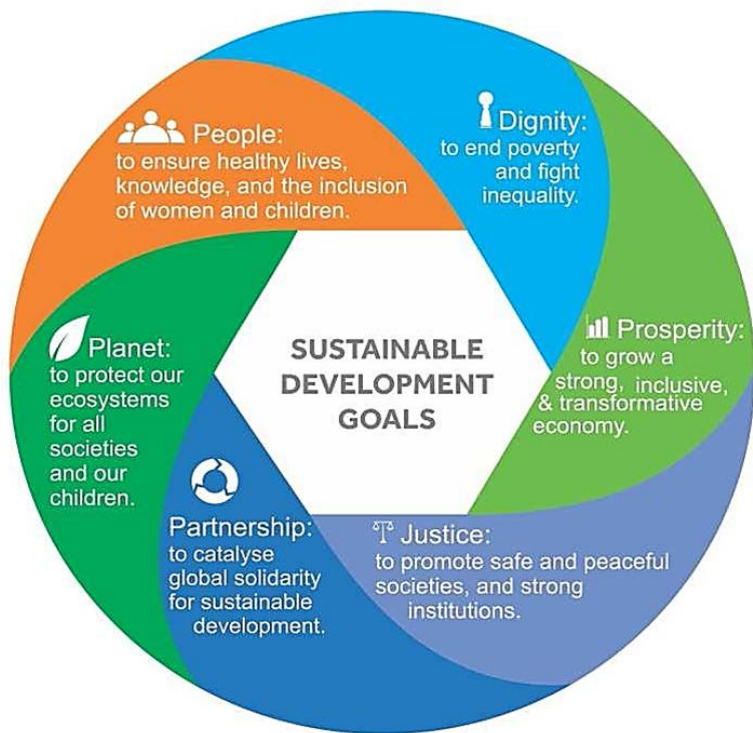


Partnerships for Effective Programming

**Dr Fabian Ndenzako- WHO IST Eastern and
Southern Africa**

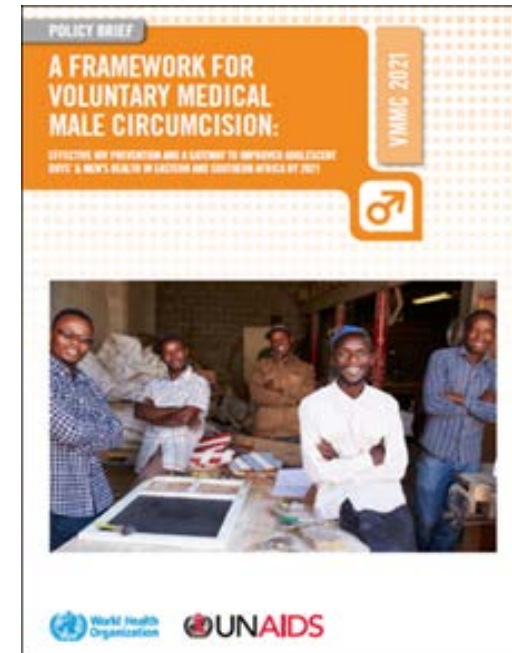
Partnership for VMMC Scale up

- 6 essential elements of SDGs, Partnerships is the



Intersectoral Collaboration-Enhanced partnerships

- VMMC2021 emphasizes building **long-term partnerships** and multisectoral approach such as
 - schools, CSOs, private sector etc
 - youth programmes and networks,
 - traditional leadership structures,
 - sports and entertainment sectors,
 - communities and the formal health sector
- Some factors to improve health outcomes, **lies outside health sectors**- 16/17 SDGs have some health related elements hence calling for stronger Health in all policies



Roles/Responsibilities of Health Sector

- It is responsibility of Health sector to provide
 - Mobilize other sectors
 - Provide technical leadership
 - Collaborate with and integrate with other sectors at various levels
 - Harmonization and alignment
- **Intra-sectoral Collaboration**
 - Procurement supply management
 - Health sector financing
 - Training/recruitment and staff management
 - Infection prevention and control
 - Monitoring and programme performance
 - Health promotion
 - Research

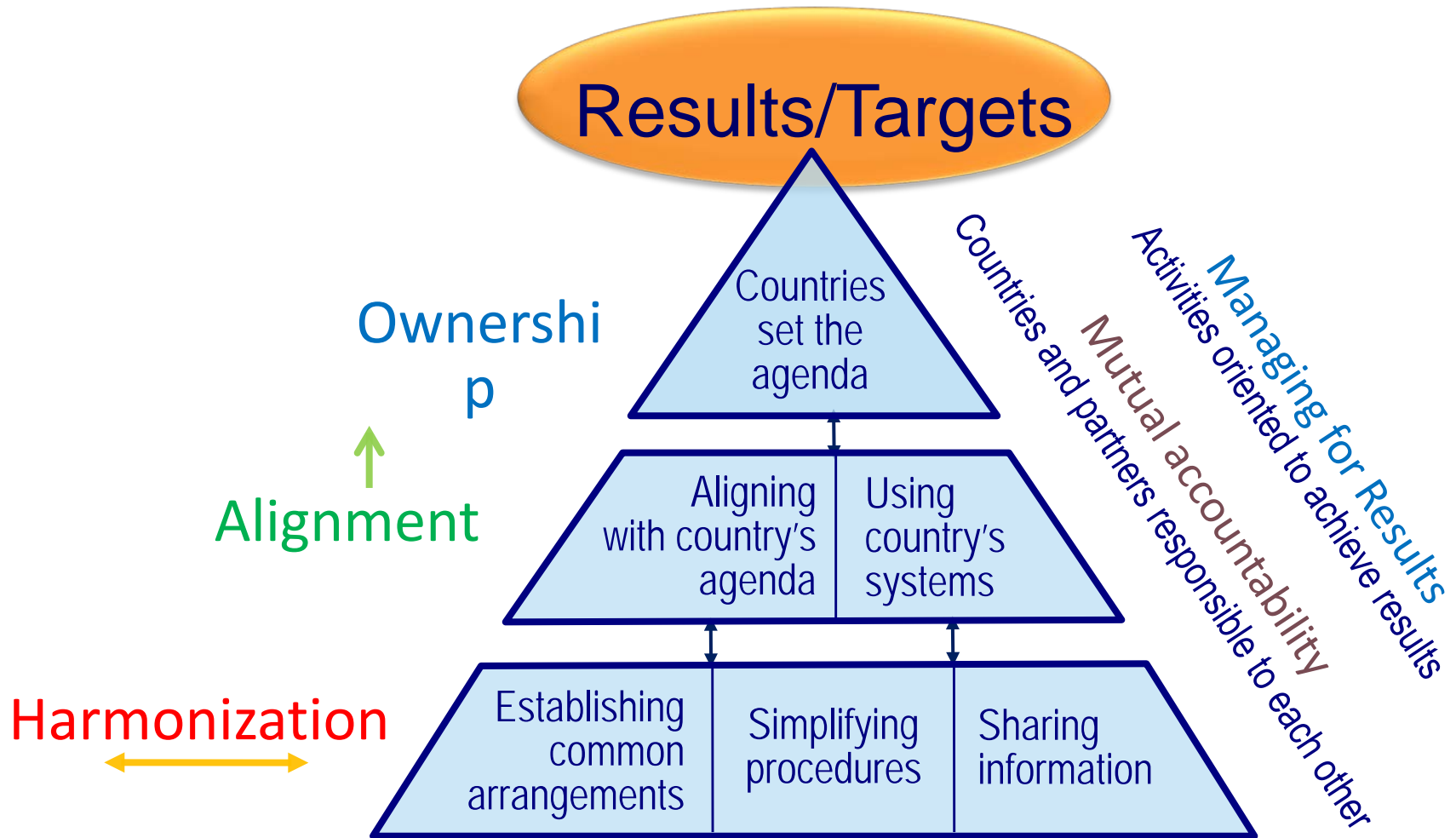
Key Steps to establish Multisectoral collaborations

- In-depth situation analysis to identify needs at all levels
- Determine existing/potential stakeholders and their capabilities to deliver based on needs
- Develop policy Framework that articulates structures for collaboration
- Enhance political commitment
- Establish multisectoral governing structures e.g TWGs with TORs
- Mobilize Resources for implementation

Principles of Partnerships

- Each partner brings a set of skills and expertise that is useful to the programme- these have to be coordinated to maximise efficiency and impact
- Most important elements are
 - Common vision/Purpose/Interests
 - Clearly and understand roles and responsibilities
 - Agree on contributions/ capacity and Geographic location
 - Transparency
 - Active maintenance of Partnerships
 - Quality participation
 - Followed on agreed meeting of agreed obligations
 - Legal and regulatory framework and enabling political environment

What do the principles mean?



Challenges in Partnerships

- Limited of country ownership/capacity
- Limited of collaboration between development partners and governments
- Inadequate alignment of partner programmes with national plans
- Lack of harmonization between development partners
- Lack of transparent information on resource flow and allocation to deliver the national targets

Thank you

